



**SUNBATTERY**  
AUSTRALIA

**SB-LFP25.6-200**

**25.6V**

**5120Wh**

**LiFePO4**  
**200AH**

- Long Cycle Life > 2000 cycles @ 100% DOD.
- High Density, High Discharge Current, High Temperature Range.
- Low Weight, Free Maintenance.
- Fast Charging.
- Environment Friendly.
- Lithium Iron Phosphate (**LiFePO4**).
- Integrated Battery Management System (BMS).

**BATTERY DATA SHEET**

Electrical Parameters	
Nominal Voltage	25.6V
Rated Capacity	200Ah
Energy	5120Wh
Resistance	≤ 30m Ω
Efficiency	99%
Cycle Life	> 2000 cycles @ 1C, 100% DOD > 4000 cycles @ 1C, 80% DOD > 6000 cycles @ 1C, 50% DOD
Self Discharge	2% per Month
Max. Battery connected in Series/Parallel	2 Series / 4 Parallel

Mechanical Parameters	
Dimension (L x W x H)	522x 268x 224 mm
	20.55 x 10.55 x 8.82"
Weight	36.5kg (80.5lbs)
Terminal Type	M8
Battery Housing	ABS, UL-94 V-0
Housing Protection	IP65
Cell Type-Chemistry	LiFePO4 Cell
SOC Display (Optional)	None

Discharge Parameters	
Continuous Discharge Current	150A
Pulse Discharge Current	300A (5 seconds)
Recommended Volt. Disconnect	20V
BMS Discharge Cut-off Voltage	16V
Reconnect Voltage	18.4V
Short Circuit Protection	200-600 us

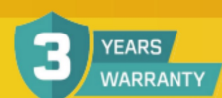
Charge Parameters	
Charge Method	CC-CV
Charge Voltage	28.8-29.6V
Recommended Float Voltage	27.6V
Recommended Charge Current	≤ 100A
Maximum Charge Current	150A
BMS Charge Cut-off Voltage	31.2V

Compliance Certificate	
Certifications	UL 1642 (cell)
	CE
	IEC 62133 & CB
	KC
	BIS
Shipping Classification	UN3480, Class 9, UN38.3

Temperature Parameters	
Discharge Temperature	-30 to 60 C (-22 to 140 F)
Charge Temperature	0 to 45 C (32 to 113 F)
Storage Temperature	-40 to 60 C (-40 to 140 F)
BMS Low Temperature Cut-off	-10°C (14 F)
BMS Low Temperature Turn-On	0 C (32 F)
BMS High Temperature Cut-off	80 C (176 F)
BMS High Temperature Turn-On	70 C (158 F)

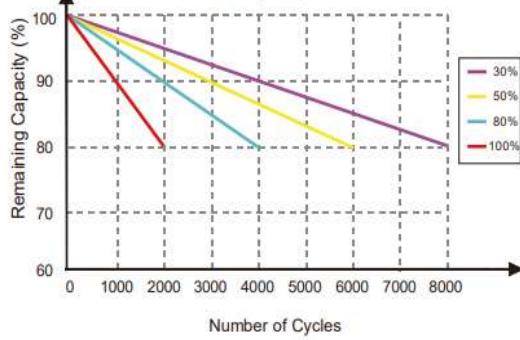


**SUNBATTERY**  
AUSTRALIA

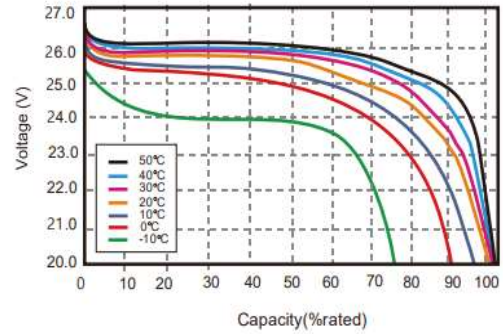


## Performance Characteristics

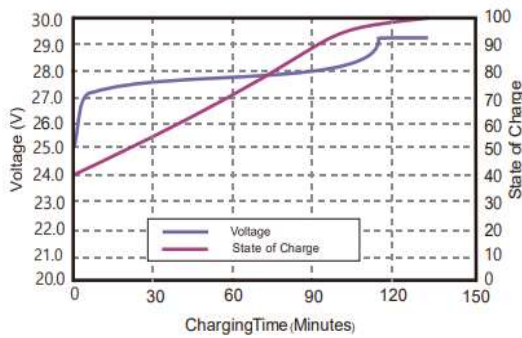
CYCLE LIFE vs. DEPTH OF DISCHARGE (DOD)  
DISCHARGE @ 1C, 25°C



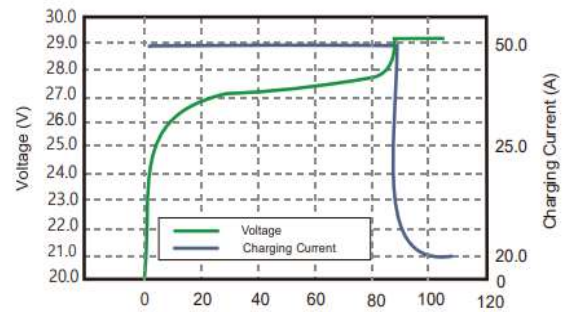
DISCHARGE CAPACITY of VARIOUS TEMPERATURES  
DISCHARGE @ 1C



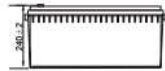
STATE OF CHARGE CURVE @ 1C, 25°C



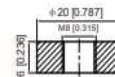
CHARGING CHARACTERISTICS @ 1C, 25°C



## Battery Dimension



M8 - 1.0x 8mm  
Threaded Hole



## Battery Applications

- + Data Center UPS
- + Power Tools, Lawn Mower
- + Telecom Backup Power
- + Electric Bike & Motorcycles
- + Military Power Supply
- + Electric Mobilities ( E-scooters, Wheelchair)
- + Solar Energy Storage System
- + Golf Trolley & Golf Carts
- + Solar Street LED Lightings
- + Medica Devices
- + Autonomously Guided Vehicles (AGVs)
- + Electric Ships
- + Industrial Robotics & Handling Equipment
- + Passenger Vehicles
- + Aerial Work Platform
- + Floor Cleaning Machines