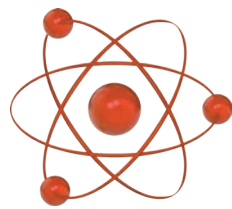


FUSION

AGM BATTERIES



CBS Series - Solar Power

CBS2V1380AH

Specifications

Nominal Voltage	2V	
Nominal Capacity (100HR)	1380.0AH	
Dimensions	Length	475 +/-3mm (18.70 inches)
	Width	175 +/-2mm (6.89 inches)
	Container Height	328 +/-3mm (12.91 inches)
	Total Height (with Terminal)	350 +/-3mm (13.78 inches)
Approx Weight	Approx 65.8 kg (145.1lbs)	
Terminal	T11	
Container Material	ABS	
Rated Capacity	1380.0AH/13.8A	(100hr, 1.80V/cell, 25°C/77°F)
	1284.0AH/64.2A	(20hr, 1.80V/cell, 25°C/77°F)
	1200.0AH/120.0A	(10hr, 1.75V/cell, 25°C/77°F)
	1054.5AH/210.9A	(5hr, 1.75V/cell, 25°C/77°F)
	705.5AH/705.5A	(1hr, 1.60V/cell, 25°C/77°F)
Max. Discharge Current	9600A (5s)	
Internal Resistance	Approx 0.40mΩ	
Operating Temp. Range	Discharge	-15~50°C (5~122°F)
	Charge	0~40°C (32~104°F)
	Storage	-15~40°C (5~104°F)
Nominal Operating Temp. Range	25° +/-3°C (77° +/-5°F)	
Cycle Use	Initial Charging current less than 360.0A. Voltage 2.4V~2.5V at 25°C (77°F) Temp Coefficient -5mV/°C	
	No limit on Initial Charging Current. Voltage 2.25V~2.3V at 25°C (77°F) Temp. Coefficient -3mV/°C	
Standby Use	40°C (104°F) 103%	
Capacity Affected by Temperature	25°C (77°F)	100%
	0°C (32°F)	86%
	Fusion CBS Series batteries may be stored for up to 6 months at 25°C (77°F) and then a freshening charge is required. For higher temperatures the time interval will be shorter.	
Self Discharge		



Applications

- ◆ Solar Farm Applications
- ◆ Communication systems
- ◆ Green Energy Systems

Fusion 2 Volt CBS Solar Series batteries are a genuine AGM VRLA (Valve Regulated Lead Acid) battery that is completely sealed, spill proof, leak proof and can be used upside down or on their side. The CBS Series is specifically designed for solar & green energy systems and can be used in confined or poorly ventilated spaces.



Constant Current Discharge (Amperes) at 25°C (77°F)

F.V/Time	30min	45min	1h	2h	3h	4h	5h	8h	10h	20h	48h	100h
1.85V/cell	880.7	698.9	580.1	361.8	280.0	230.6	196.3	139.8	116.2	62.0	27.5	13.5
1.80V/cell	945.0	735.3	616.3	382.2	293.2	240.9	204.6	144.2	120.0	64.2	27.9	13.8
1.75V/cell	1000.7	773.1	643.0	396.6	303.2	249.1	210.9	146.9	121.8	64.5	28.4	13.9
1.70V/cell	1050.0	802.3	665.6	408.6	311.2	254.5	214.5	149.2	123.1	65.3	28.7	14.1
1.65V/cell	1101.4	837.2	689.4	418.2	318.8	260.0	219.1	151.3	124.9	66.2	29.1	14.3
1.60V/cell	1138.9	859.4	705.5	427.2	324.4	263.6	222.3	153.3	126.6	66.9	29.4	14.4

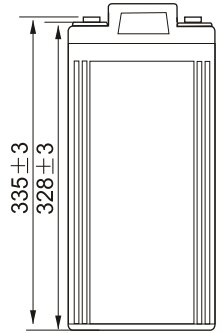
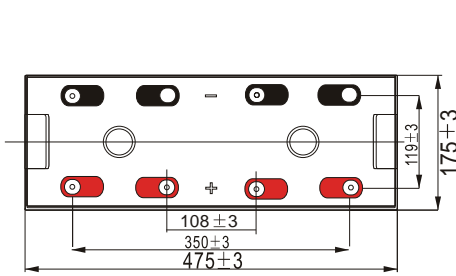
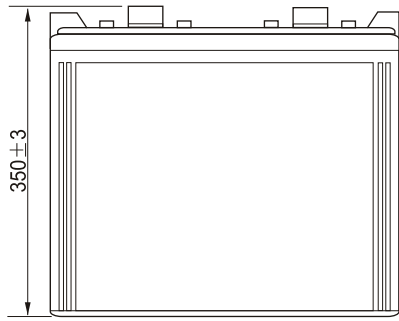
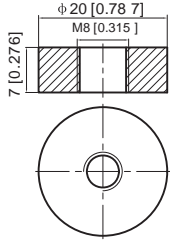
Constant Power Discharge (Watts) at 25°C (77°F)

F.V/Time	30min	45min	1h	2h	3h	4h	5h	8h	10h	20h	48h	100h
1.85V/cell	1683.1	1341.7	1122.0	703.7	547.2	452.2	386.8	277.4	231.0	123.4	54.8	27.0
1.80V/cell	1791.4	1404.4	1185.4	739.9	570.3	470.9	401.3	285.3	238.3	127.6	55.5	27.5
1.75V/cell	1882.6	1468.0	1231.4	764.7	588.2	485.2	412.2	290.0	241.6	128.1	56.4	27.7
1.70V/cell	1958.7	1512.7	1267.8	784.5	601.5	493.8	418.1	294.2	244.0	129.5	56.9	28.1
1.65V/cell	2039.4	1569.8	1305.8	799.6	613.4	502.7	425.5	297.7	247.2	131.2	57.6	28.4
1.60V/cell	2087.7	1596.3	1327.1	811.7	621.0	507.4	430.0	301.1	250.1	132.4	58.1	28.6

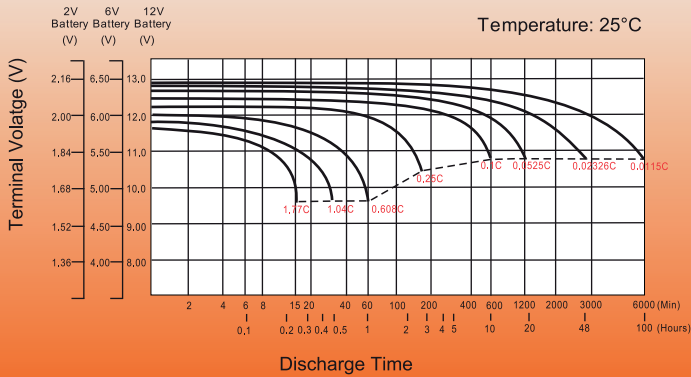
Dimensions

T11 Terminal

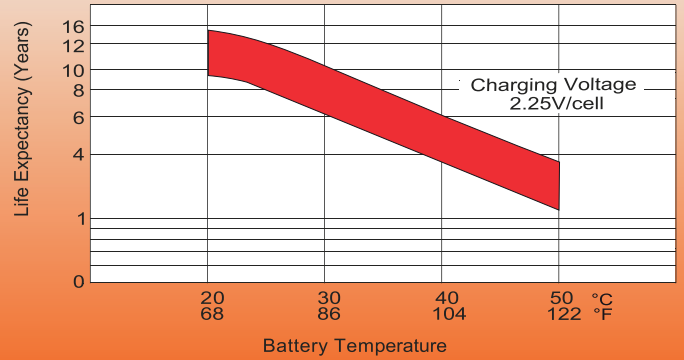
Unit: mm [inches]



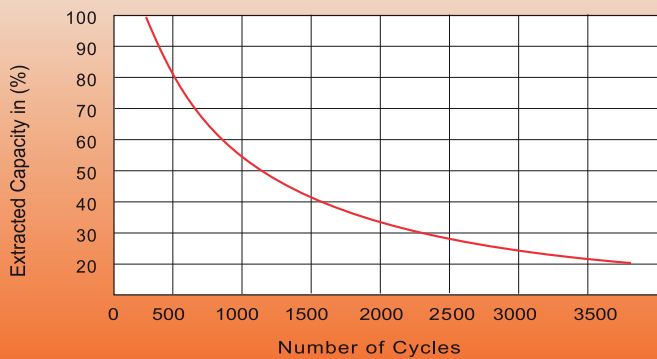
Discharge Characteristics



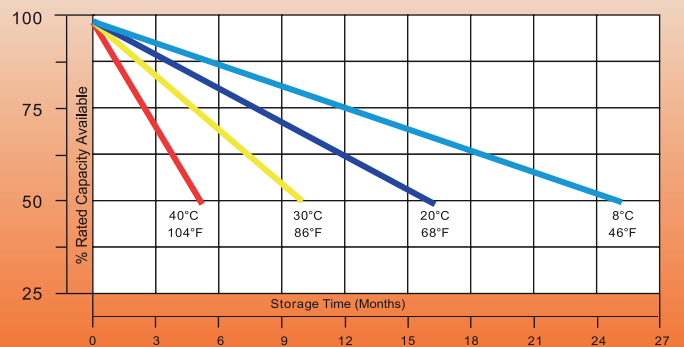
Effect of Temperature on Long Term Float Life



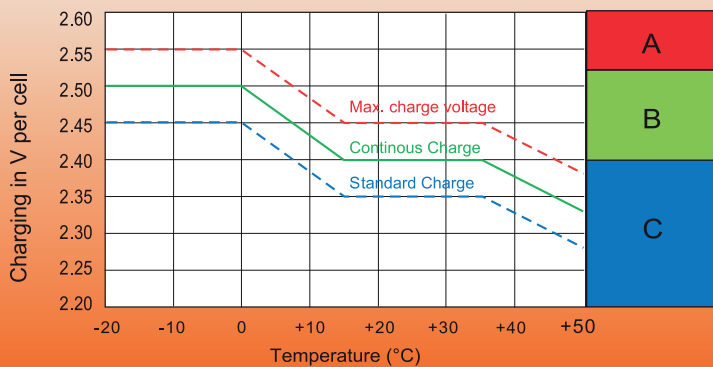
Cycle Life in Relation to Depth of Discharge



Self-Discharge at Different Temperatures



Charge Mode



- A** With switch regulator (two-step controller) charge on curve max. charge voltage for max. 2 hrs/day then switch over to continuous charge.
- B** Standard charge without switching.
- C** Boost charge (Equalizing charge with external generator) charge on curve continuous charge for max. 5 hrs/month, then switch over to curve Standard charge.

Australian East Coast Distributor

Solar Battery Warehouse
 Sugar Road
 Maroochydore QLD 4558
 Tel: 1300 883 847
www.solarbatterywarehouse.com.au

